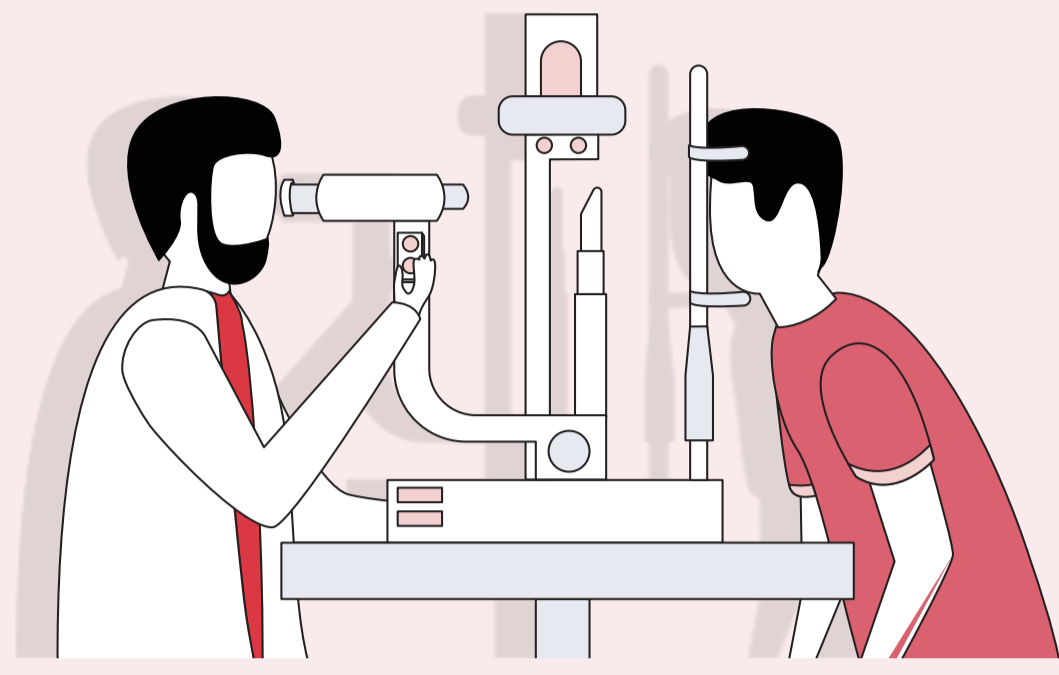


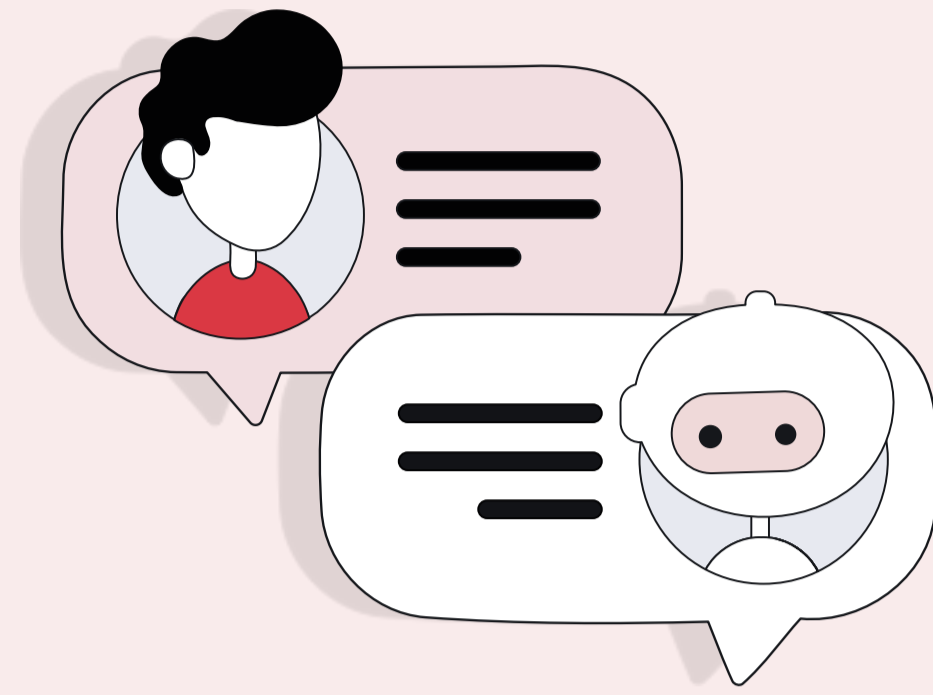
AI Projects Deployed

Improving citizen well-being and raising productivity



SELENA+

- A deep-learning AI tool that helps practitioners detect and diagnose diabetic retinopathy quickly and more efficiently
- Projected to screen 120,000 patients/year at all 22 polyclinics



OneService Chatbot, Kaki

- Powered by machine learning, the chatbot evaluates and classifies reported municipal issues, and routes the cases to the relevant government agency for follow-up
- Users can engage with Kaki on social messaging platforms such as WhatsApp and Telegram



SmartBooking and iBOX platforms

- Seamlessly connect and allow data exchange between key transportation nodes across the logistics value chain
- Optimise deployment of trucks and manpower, enhancing efficiency and competitiveness of Singapore's logistics industry

AI-fuelled Economy

Supporting AI innovation and upskilling



AI Singapore's (AISG) Education Programmes

- >55,000 students and adult learners, >5,000 working professionals and ~180 AI engineers upskilled/trained over the past 3 years



AISG's 100E Programme

- >70 companies supported, under this scheme to co-create AI solutions

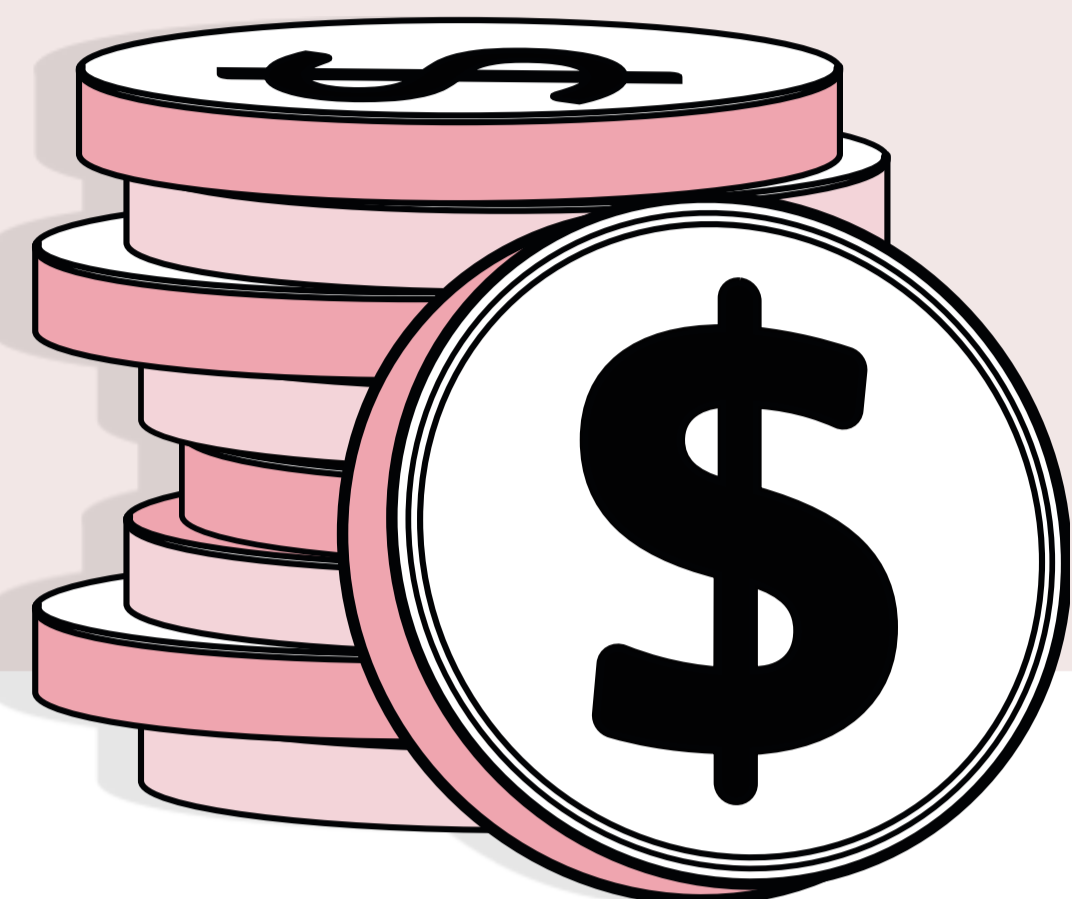


TechSkills Accelerator (TeSA)

- >10,000 Singaporeans trained and placed in good tech jobs, including AI ones, since 2016

National AI Strategy

New initiatives to advance Singapore's AI Ambitions



\$180 million top-up for AI research and development under the Research, Innovation and Enterprise (RIE) 2025 plan

- The funds will support **fundamental research, translational research and industry-research collaborations** to accelerate AI adoption



National AI Programme in Government

Leveraging AI to transform government services to deliver high-impact outcomes for citizens and businesses.

Initiatives under the programme include:

- **AI smart planning assistant** to enhance the way we plan and design our city
- **JumpStart platform** with recommendation engines for jobs and skills matching
- **Central AI products** for AI applications that can be used across Government



National AI Programme in Finance

Growing Singapore into a global hub for financial AI solutions.

Initiatives under the programme include:

- **NovAI**, an AI platform to assess companies' environmental impact and identify emerging environmental risks
- **COSMIC**, an Anti-Money Laundering / Countering Financing of Terrorism (AML/CFT) data sharing platform